

 4 bedrooms
  3 bathrooms
  Single Garage
  162 Sq M



## VIENNA II

### INCLUSIONS:

- ✓ M class slab on ground
- ✓ 2400 mm ceiling ground floor;
- ✓ Ducted air conditioner;
- ✓ Carpet to First Floor;
- ✓ Floor tiling to Kitchen Ground floor and all Wet Areas;
- ✓ Mirrored Sliding robes;
- ✓ Clothes line and Letter box;
- ✓ Turf front and backyard;
- ✓ Colored driveway;
- ✓ Six months completion;

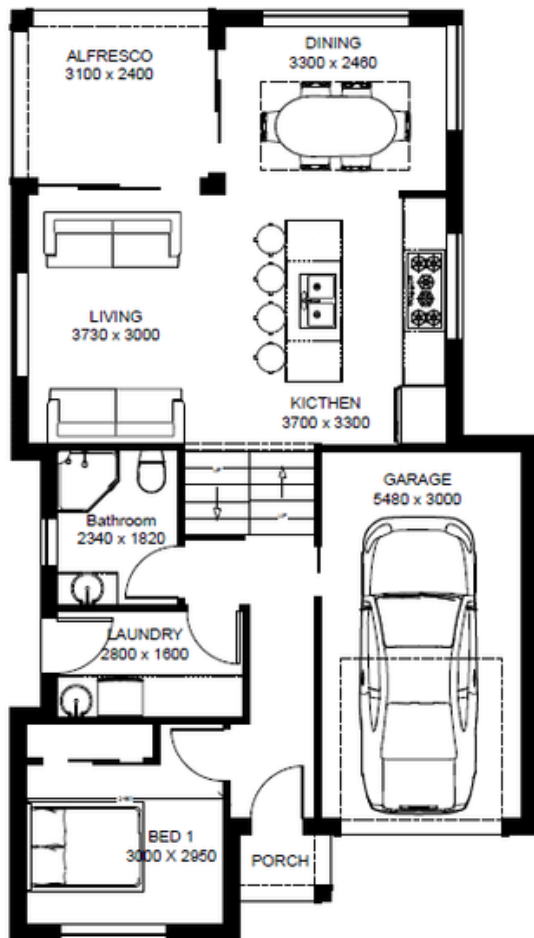


## KEY FACTS

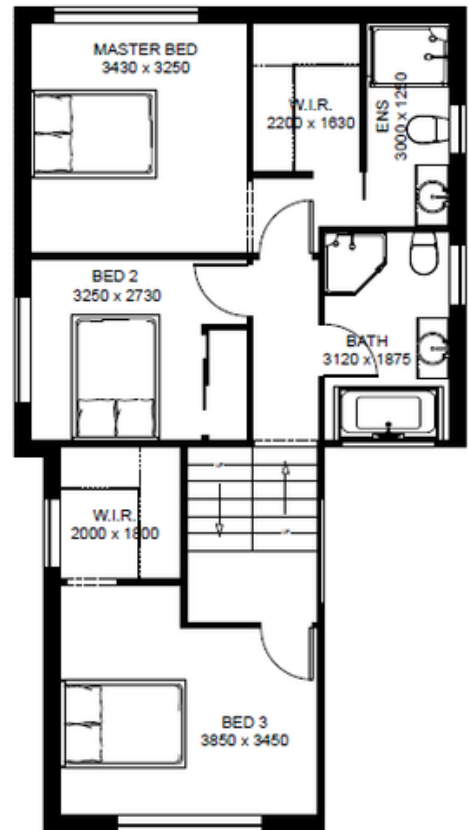
- ✓ Double Storey
- ✓ 4 bedrooms
- ✓ 3 bathrooms
- ✓ Single Garage
- ✓ 162 Sq M
- ✓ Exterior width 7.83m
- ✓ Exterior length 13.80m

### FLOOR AREAS

Ground Floor	94.00 sqm
First Floor	68.00 sqm
Total Floor Area	162.00 sqm



Ground floor



First floor

BOUNDARY

BOUNDARY

7.83 M

13.80 M